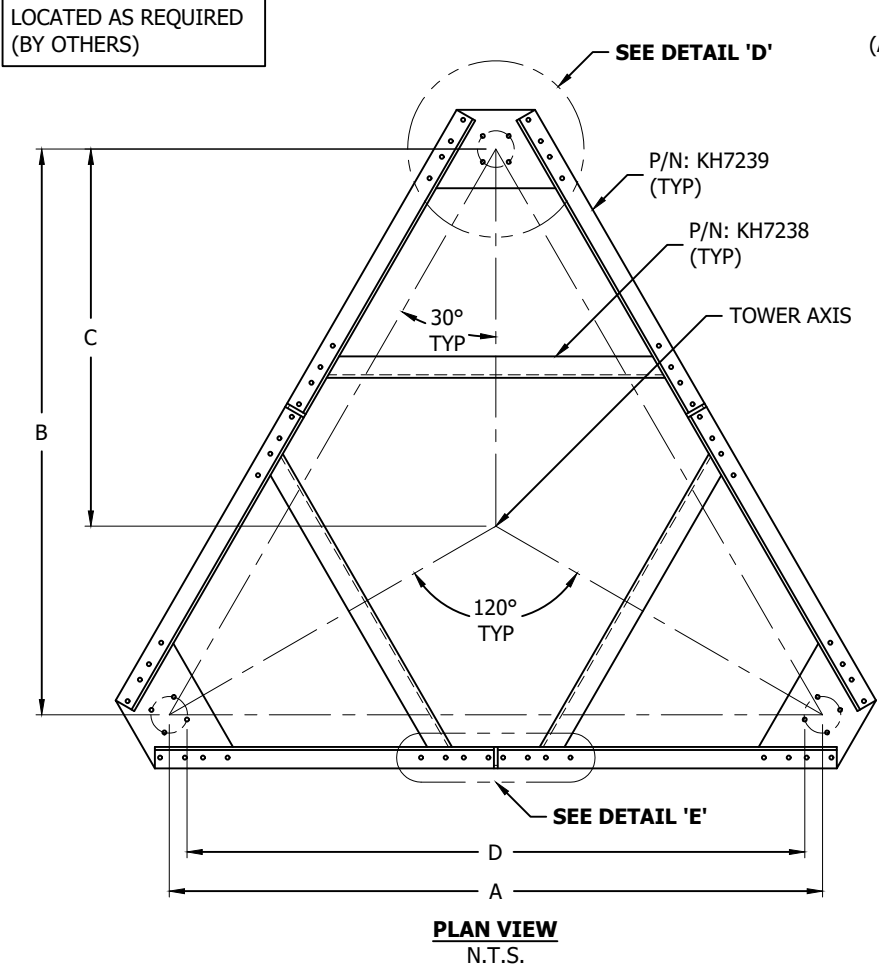
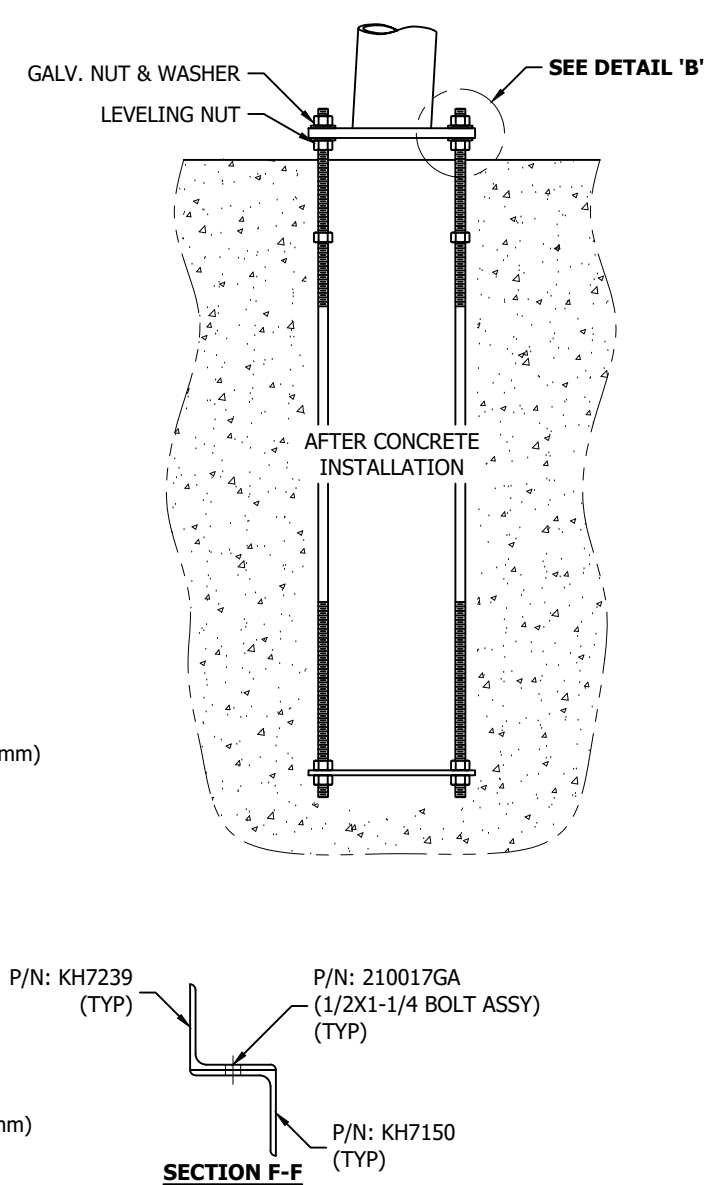
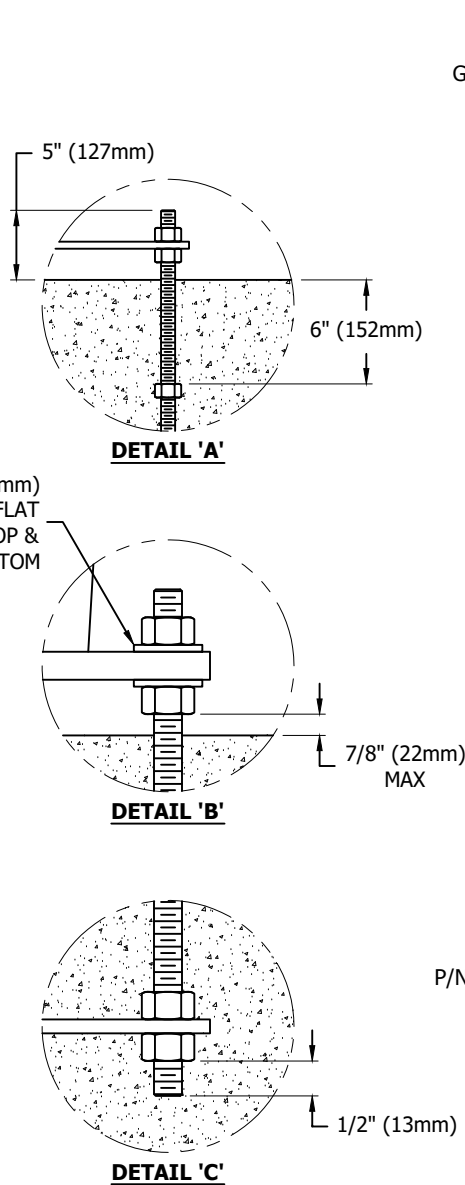
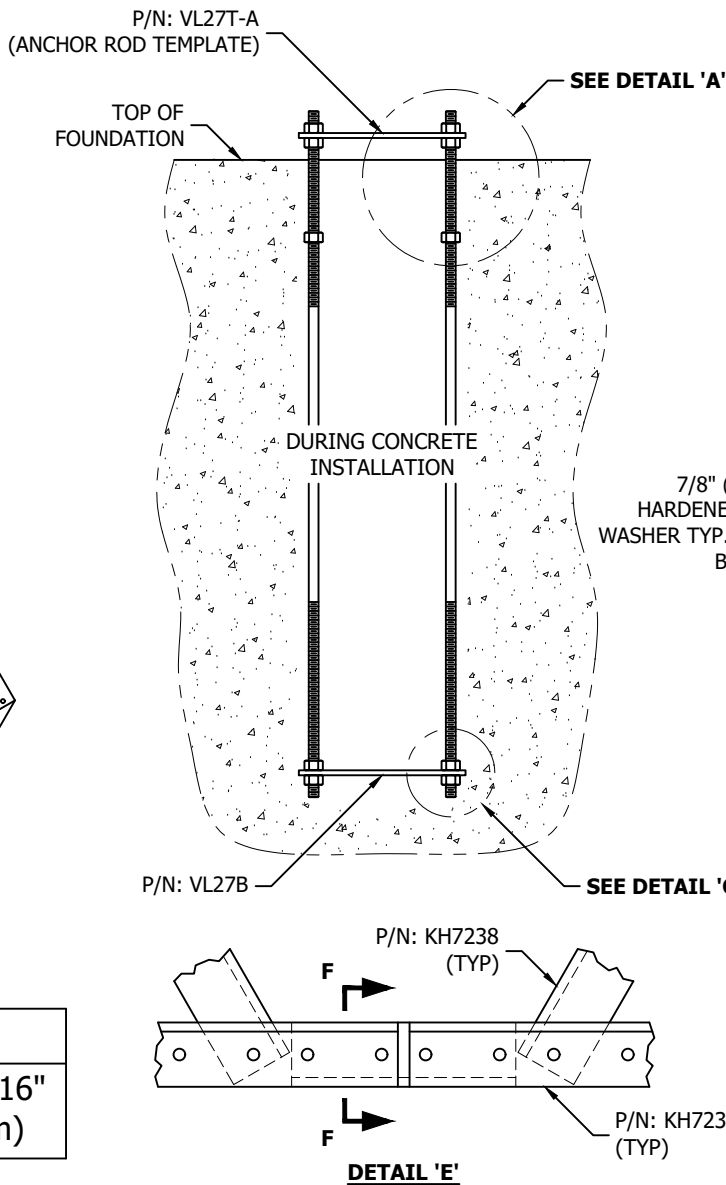


LEVELING BLOCKS TO BE LOCATED AS REQUIRED (BY OTHERS)



A	B	C	D
12'-7 5/8" (3.851m)	10'-11 5/16" (3.335m)	7'-3 9/16" (2.224m)	12'-0 13/16" (3.678m)



ANCHOR ROD INSTALLATION TOLERANCES

- FACE SPREAD DIMENSION CENTER-TO-CENTER OF ANCHOR ROD CIRCLES - PLUS OR MINUS 1/16" (2mm) OR 1/16"(2mm) PER 20 FT. (6m) OF FACE SPREAD.
- MAXIMUM DIFFERENCE BETWEEN ANY TWO FOUNDATION ELEVATIONS - 1/2" (13mm).
- CONCRETE DIMENSIONS - PLUS OR MINUS 1" (25mm).
- DEPTH OF FOUNDATION - PLUS 3" (76mm) OR MINUS 0".
- DRILLED FOUNDATIONS OUT OF PLUMB - 1.0 DEGREE.
- REINFORCING STEEL PLACEMENT - PER A.C.I. 301.
- PROJECTION OF EMBEDMENTS - PLUS OR MINUS 1/8" (3mm).
- VERTICAL EMBEDMENTS OUT OF PLUMB -1/2 DEGREE.
- MAXIMUM DISTANCE FROM CENTERLINE OF ANCHOR RODS TO CENTERLINE OF FOUNDATION - 1/24 OF PIER DIAMETER UP TO A MAXIMUM OF 2" (50mm).
- ANCHOR ROD SPACING - 1/16" (2mm).
- ANCHOR ROD CIRCLE ORIENTATION - 1/4 DEGREE.
- ANCHOR ROD CIRCLE DIAMETER - PLUS OR MINUS 1/16" (2mm).

!!! WARNING !!!

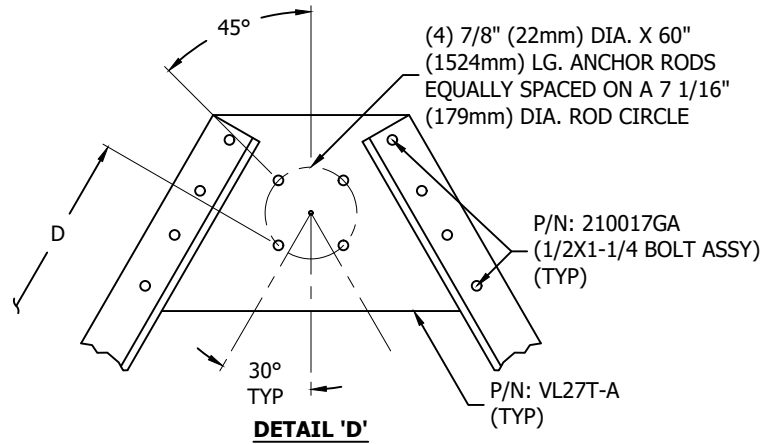
- ENSURE DIMENSIONS A-D ARE CORRECT ON ALL FACES PRIOR TO PLACING CONCRETE AND THAT THE NUMBER AND SIZE OF ANCHOR RODS MATCHES THE STRUCTURE DRAWING.
- AFTER ANCHOR RODS ARE INSTALLED AND CONCRETE HAS TAKEN ITS INITIAL SET, ANCHOR RODS MUST NOT BE MOVED, BENT OR REALIGNED IN ANY MANNER.

ANCHOR ROD TIGHTENING NOTES

- NUTS, THREADS AND ALL NUT CONTACT SURFACES MUST BE CLEANED AND LUBRICATED AFTER CONCRETE INSTALLATION AND IMMEDIATELY BEFORE INSTALLATION OF LEVELING AND TOP NUTS. NUTS MUST BE FREE TO MOVE THROUGHOUT THE ENTIRE LENGTH OF THE ANCHOR ROD THREAD PROJECTION.
- AFTER LEVELING THE LEVELING NUTS AND SETTING THE BASE PLATE, TOP NUTS MUST BE INSTALLED IN AN INCREMENTAL STAR TIGHTENING SEQUENCE TO A SNUG TIGHT CONDITION FOLLOWED BY TIGHTENING THE LEVELING NUTS IN A SIMILAR PATTERN TO A SNUG TIGHT CONDITION. SNUG TIGHT IS DEFINED BY THE TIGHTNESS OBTAINED WITH THE EFFORT OF ONE PERSON WITH A 12 INCH NOMINAL LENGTH WRENCH.
- AFTER ALL TOP AND LEVELING NUTS ARE TIGHTENED TO A SNUG TIGHT CONDITION, TOP NUTS SHALL BE FURTHER TIGHTENED IN AN INCREMENTAL STAR PATTERN WITH THE LEVELING NUTS SECURED TO RESULT IN A 1/3 TOP NUT ROTATION FOR ANCHOR RODS 1-1/2 INCHES OR LESS IN DIAMETER, OR A 1/6 TOP NUT ROTATION FOR ANCHOR RODS GREATER THAN 1-1/2 INCHES IN DIAMETER.

NOTES

- ALL ANCHOR RODS MUST MEET OR EXCEED REQUIREMENTS OF A.S.T.M. F1554-S2, S5 GRADE 105.
- ANCHOR RODS ARE GALVANIZED FULL LENGTH UNLESS OTHERWISE SPECIFIED.
- SPECIAL CARE MUST BE TAKEN WHEN LIFTING ANCHOR ROD CLUSTER TO PREVENT ANCHOR ROD TEMPLATE DISTORTION.
- ANCHOR ROD ASSEMBLY MUST BE ADEQUATELY SUPPORTED AND RESTRAINED TO PREVENT MOVEMENT OF THE CLUSTER DURING CONCRETE INSTALLATION.
- IT IS THE RESPONSIBILITY OF THE FOUNDATION CONTRACTOR TO VERIFY THAT THE CORRECT ANCHOR ROD TEMPLATE AND FOUNDATION SHOWN ON RESPECTIVE SITE DRAWINGS ARE BEING USED.
- IT IS THE RESPONSIBILITY OF THE FOUNDATION DESIGN ENGINEER TO INSURE THAT THE ANCHORAGES PROVIDED ARE COMPATIBLE WITH THE PROPOSED FOUNDATION DESIGNS AND THAT THE CAPACITIES OF THE ANCHORAGES ARE NOT LIMITED BY THE STRENGTH OF THE FOUNDATIONS.



- !! WARNING !!**
- PRIOR TO PLACING CONCRETE:**
- CHECK THAT THE TEMPLATE ANCHOR ROD CIRCLE MATCHES THE ANCHOR ROD CIRCLE SHOWN ON THE STRUCTURAL DRAWING.
 - CALL ROHN (309)-566-3000 FOR ANY DISCREPANCY.

FILE NO.

REVISIONS

REV.	DESCRIPTION	DWN	CHK	APP
5	ADDED WASHERS	JEC	JHY	HA
DATE: 09/06/2019				

ROHN
PRODUCTS LLC

PO BOX 5999
PEORIA, IL 61601-5999
TOLL FREE 800-727-ROHN

THIS DRAWING IS THE PROPERTY OF ROHN. IT IS NOT TO BE REPRODUCED, COPIED OR TRACED IN WHOLE OR IN PART WITHOUT OUR WRITTEN CONSENT.

ANCHOR ROD LAYOUT
7/8" [22mm]Ø RODS (12D1264FST)

DWN: JDM	CHK'D: KTL	DATE: 01/27/2010
ENG'R: HA	SHEET #: 1 OF 1	
PRJ. ENG'R:	PRJ. MANG'R:	
DRAWING NO: B090207	REV: 5	